

---

## Index of Advertisers

---

To place an advertisement contact **Freda Lloyd** on 01638 742368.  
**Rates:** Full page £60/year; half page £30/year; quarter page £15/year

B&B The Meadow House, Burwell	2
B&B Hilary's Cottage, Swaffham Prior	2
Self-catering Accommodation, Elm Tree Cottage, Culgaith, Near Penrith, Cumbria	3
Five Miles No Hurry Inn, Upware	3
Bottisham Sports Centre	4
Jane Newbury School of Dancing	5
Garden Tools and Machinery Shaun Mayes	5
M A Rennie Heating Services	6
Saniclean Drain and Plumbing Services	7
Brush Electric Sweep	7
Manchetts Rescue and Recovery	7
John Reed Landscape Gardener	8
Rothwell's Carpet Cleaning	8
Harrisons of Burwell Plumbing, Heating and Drain Services	9
Safeclean Carpets, Upholstery, Rugs and Leather	9
Kem Interiors Kitchens and Bathroom Installation, Wood Floor and Tiling	10
TVS Direct Aerial and Satellite TV Systems	10
Browns of Burwell Oil Suppliers for Home, Farm and Industry	10
Manchetts Car Sales, Service and MOTs	11
The Rubber Roofing Company	11
Drain-Plumb Plumbing, Heating and Drain Services	11
Andy Pumfrey Painter and Decorator	12
Anglia Gas and Electrical Services	12
AMH Services Oil and Gas Boiler Repair and Service Plumbing and Heating Specialist	13
Chimney Sweep J L Wight	13
Red2GreenHouse at Bottisham Village College	14
Burwell Computers	14
Hazels Cleaning Service	14
Southgate of Newmarket Funeral Directors	15
The Red House Day Nursery, Burwell	16
Spring Close, Montessori School, Burwell	16
Little Windmills Pre-School, Reach Village Centre	17
Get It Sorted!	18
Lindsey Home Hairdressing	18
Therapeutic Massage Manicure and Pedicure Ann Kiddy	18
Cambridge Building Society	19
Sun Studios Beauty Centre	19
Independent Financial Solutions	20
The Dyke's End Public House, Reach	21
Madmix Ready Mixed Concrete	22
Madingley Mulch Barks, Soils, Composts, Mulches, Conditioners	22
Bannold Natural Hard Landscaping Materials	23
Hire of Marquees and Gazebos Reach Village Hall	24
100 Club Village Centre	24

# **BED AND BREAKFAST**

## **THE MEADOW HOUSE**

2A High Street Burwell Cambridge CB25 0HB

- ◆ En-suite rooms available with colour TV and tea making facilities
- ◆ Large car park and grounds
- ◆ Family rooms, children welcome
- ◆ Open all year
- ◆ Fire certificate / No smoking
- ◆ English Tourist Board 4 Diamonds

**Brian and Hilary Marsh**

Tel: 01638 741926

Fax: 01638 741861

Website [www.themeadowhouse.co.uk](http://www.themeadowhouse.co.uk)



# **BED AND BREAKFAST**

## **Hilary's Cottage**

Detached Holiday Cottage available for your guests in Swaffham Prior

Sleeps up to 6 people in 3 bedrooms. 2 bathrooms - one en suite

Parking. Small secluded garden

Available for short breaks or longer lets.

**VB 4 stars**

**Contact Hilary Marsh 01638 741926**

Or [www.themeadowhouse.co.uk](http://www.themeadowhouse.co.uk) and follow the link to Hilary's Cottage

Or [www.hilaryscottage.co.uk](http://www.hilaryscottage.co.uk)

**2A High Street Burwell Cambs CB25 0HB**



# Elm Tree Cottage

**Culgaith, near Penrith, Cumbria**

Self catering accommodation

You will find Elm Tree Cottage a real home from home.

3 bedroom detached house for self catering right in the centre of Culgaith, one of the delightful fellside villages. An ideal base from which to explore the Lakes, Scottish Border Country, North Pennines, The Dales and The Carlisle to Settle Railway.

Double garage, parking, doubling glazing, central heating, open fire, sleeps 2-6 in very comfortable beds.

You will find our holiday house extremely well equipped, dishwasher, microwave, freezer, washing machine, video, colour TV's, incoming phone.

Open all year. Short breaks available in low season.

For colour pictures please see our website [www.elmtreecottage.co.uk](http://www.elmtreecottage.co.uk).

Pets Welcome

No Smoking

For further information and brochure contact Mrs H. Marsh Tel 01638 741926

ELM TREE COTTAGE, CULGAITH, PENRITH, CUMBRIA CA10 1QW

## **FIVE MILES NO HURRY INN UPWARE**

***Lorraine and Dave welcome you to join them  
at their  
Riverside Restaurant and Pub***

- **Cooking 7 days and 7 nights  
(All day Saturday and Sunday)**
- **Monday night special - Main and sweet only £6.50**
- **Tuesday Night Special - Bangers 'n' Mash only £4.00**
- **Thursday Night special - Battered Cod & Chips only £5.50**
- **Friday Night special (from 10.00pm) - Curry only £4.00**
- **Main Menu and Specials Board**

**Regular Music nights**

**Pool Bar - Main Bar - Beer garden**

**Childrens Play Area**

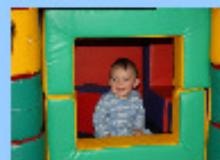
**Function Room available**

**Tel: 01353 721654**

# Bottisham Sports Centre



Lode Road  
Bottisham  
CB25 9DJ



Tel: 01223 811121

Web: [www.bottishamvc.org/sportscentre](http://www.bottishamvc.org/sportscentre)

Email: [sportscentre@bottishamvc.org](mailto:sportscentre@bottishamvc.org)

## Facilities...

### 4 lane 25 meter Swimming Pool...

Public Swim Sessions, Adults Only, Monster Island  
Fun Sessions,

**FREE Swimming for Under 16's and Over 60's!**

Contact the centre for session times.

### Sports Hall...

Football, Cricket, Netball

### Gymnasium...

Basketball, Badminton, Table Tennis

### Outside Courts...

Flood Lighted Football, Tennis and Netball

### Fitness Suite...

Brand New Resistance Machines, Upgraded CV  
Machines, Fully Accessible

## Activities...

### Workout Classes...

Spinning, Circuit Training, Aerobics, Boxercise,  
Pilates, Water Aerobics

### Swimming Lessons...

Adult and Child, Pre-school, Children's, Adults, All  
ages and abilities

### Holiday Activities...

Sports Days, Football Coaching, Water Polo,  
Bouncy Castle Sessions, Cheerleading

### Birthday Parties...

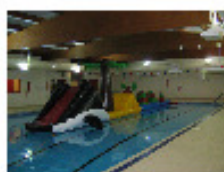
Monster Island, Bouncy Castle, Various Sports

### Sports...

Football Coaching, Judo, Swimming Lessons, Dance  
Classes

### Martial Arts...

Judo, Tang Soo Do Karate, Multi Style for adults



## Opening Times

Monday - Friday 6.45am - 10pm

Saturday - 7.15am - 6.00pm

Sunday - 7.15am - 7.00pm



**JANE NEWBURY A.I.S.T.D. C.B.**  
Ex Royal Ballet

## **SCHOOL OF DANCING**

Dance classes in Swaffham Bulbeck School Hall

### Mondays

Nursery Movement	3:00-3:30pm
Junior Ballet	3:45-4:15pm
Junior Modern Dance	4:15-4:45pm
Intermediate Ballet	4:45-5:15pm
Senior Modern Dance	5:15-5:45pm
Senior Ballet	5:45-6:30pm
Ladies Ballet	6:30-7:30pm

### Wednesdays

Dance Club A	4:30-5:30pm
Dance Club B	5:30-6:30pm
Adult Tap Class	6:30-7:30pm

For further details please telephone 01223 812154



## **Garden Tools & Machinery**

### **MINOR REPAIRS AND SERVICING**

#### REPAIRED AND SERVICED

Lawn mowers  
Strimmers  
Hedge cutters

#### SHARPENING SERVICE

Rotary mower blades  
Hedge cutters  
Hand/edging shears  
Spades and hoes etc.

Gardening and Handyman services also available.

SHAUN MAYES 07880 931024

# M.A.RENNIE Heating Services

Tel. 01223 881007.

**SPECIALIST IN RENEWABLE HEATING SYSTEMS  
LOOKING TO REPLACE YOUR OLD FOSSIL FUEL BOILER?  
NEED SOMETHING MORE EFFICIENT WITH LOWER RUNNING COSTS?**

- Mitsubishi ecodan air source heat pump accredited installer,
- Servicing, repair and full installs of heating systems,
- Specialist in removal & replacement of oil tanks,
- Oftec registered 101-105e business and technician,
- All plumbing work including water cylinders, radiators, pipework & controls.

Please visit [www.marennieheating.com](http://www.marennieheating.com) for more info



**R. Bristley**

**9 Collings Place Newmarket**

Drains Unblocked Fast

Toilets, Baths & Sinks

**SANICLEAN**

DRAIN & PLUMBING SERVICE

Guttering & Downpipes

Drain Repairs & CCTV Surveys

High Pressure Water Jetting

Domestic & Industrial

All Work Guaranteed



Tel; Newmarket  
(01638) 662439

Mobile 07970 038404

**R. Bristley**

**9 Collings Place Newmarket**

**BRUSH ELECTRIC  
SWEEP**

All Chimneys Swept

Solid Fuel, Oil & Gas

Cowls, Nets & Pots Fitted

Stoves Installed

Carpets Cleaned

Competitive Prices

Very Clean

Family Business

Public Liability Insurance



Tel; Newmarket  
(01638) 662439

**MANCHETTS**

**Cambridgeshire • Suffolk**

**Rescue & Recovery**

**24hr  
response centre**

**01638  
742987**

***"For all your rescue & recovery needs at the roadside,  
motorbikes, vans, cars, and commercial vehicles alike"***

**www.manchetts.co.uk e-mail: recovery@manchetts.co.uk**

**Broads Road Burwell Cambs CB5 0BQ**



# John Reed

## Landscape Gardener

Patios

Lawns

Fencing

Tree Surgery

Pruning



*Estimates Given*

12 SWAFFHAM ROAD, REACH, CAMBS  
TEL 01638 742140

## ROTHWELL'S CARPET CLEANING

[www.prideinthejob.com](http://www.prideinthejob.com)

High pressure hot water extraction

Established 1993, and local

Only pay if and when satisfied

We can lift and move the furniture

Better than D.I.Y. machines or dry cleaning

Specialist upholstery cleaning

*If you use us you'll recommend us*

For a firm, fully inclusive price, please phone Max Campbell on

Office **01223 832 928**

Mobile **07711 675 613**



To place an advertisement contact us on 01638 742873  
Rates: Full page £90/year, half page £50/year, quarter page £15/year

# **HARRISONS OF BURWELL LIMITED**

## ***GAS SAFE REGISTERED***

All Plumbing, Heating and Drain services

CORGI REGISTRATION NUMBER 12587

7 Ness Road, Burwell, Cambridge,  
CB25 0AA

*Telephone 01638 742873*

*Mobile 07932773515*

*Nigel Harrison*



Professional Cleaning of  
Carpets, Upholstery,  
Rugs & Leather

**Safe Organic  
Cleaning**

Safeclean  
Cambridge Ltd

08700 465 528

[www.safeclean.co.uk](http://www.safeclean.co.uk)



- Organic based cleaning solutions
- Allergy-Out anti allergy treatment
- Guardsman anti-stain protection
- Spot cleaning & stain removal
- Free advice & estimates

# KEM

## Interiors

Specialist in Kitchens &  
Bathrooms Installation.  
Wood Floor and Tiling.

Years of Experience  
around Cambridge  
and Newmarket.

Call Serge on

**07969 134 765**

**01638 742 063**

**FREE ESTIMATE**

# TVS DIRECT

## Aerial & Satellite TV Systems

Freeview

freesat

sky

- ✓ Digital aerials and Upgrades
- ✓ Sky, Freesat & European Satellite
- ✓ Flat screen TV wall mount
- ✓ Projector and Sound Systems
- ✓ Telephone and Data points
- ✓ CCTV Security systems
- ✓ Domestic and Commercial



FREE



FREE ADVICE & ESTIMATES

**01353 669471**

[sales@tvdirect.co.uk](mailto:sales@tvdirect.co.uk)

[www.tvdirect.co.uk](http://www.tvdirect.co.uk)

# BROWNS OF BURWELL LTD



Fuel

Telephone: 01638 741306

Email: [sales@brownsofburwell.co.uk](mailto:sales@brownsofburwell.co.uk)

[www.brownsofburwell.co.uk](http://www.brownsofburwell.co.uk)



Registered  
Technician

Oil Suppliers for the Home, Farm and Industry.  
Lubricants, Bottled Gas and Pre-Packed Coal.

**Oftec Registered** tank suppliers and installers.  
Compliant with all the new rules and regulations.

**Better service & Better prices,**  
Its what you deserve from your local distributor.

Tel:  
01638  
742839

# MANCHETTS

**FOR ALL YOUR MOTORING NEEDS  
ON CARS & LIGHT COMMERCIALS**

Car Sales, Service & Mot's  
Ness Road Burwell Cambs CB5 0AA  
A family company since 1961  
[www.manchetts.co.uk](http://www.manchetts.co.uk)

**Finally, a guaranteed solution  
for your flat roof problems,  
proven to last over 40 years!**

**Does your roof suffer from any of these signs?**  
Moss growth • Cracks or bumps • Leaks • Expired guarantee •  
Or is it more than 5 years old?

**Stop! Replace it now, replace it permanently  
and prevent misery from a leaking roof.**

Before

After

Unlike felt, RubberBond EPDM will not split, leak or crack and it's tough enough to walk on. Installed in full compliance with the revised Building Regulations of April 2006!

**RUBBERBOND**  
EPDM ROOFING SYSTEMS  
APPROVED INSTALLER

**THE RUBBER ROOFING COMPANY**

Call **NOW** for your **FREE**, no obligation quotation - valid for 12 months.

**01223 258049**  
Lines open 24 hours a day, 7 days a week

Consumer Protection Association [therubberroofingcompany.com](http://therubberroofingcompany.com)

# DRAIN-PLUMB

*Plumbing Heating & Drain Services*

**BLOCKED DRAINS CLEARED**

- Home Buyers CCTV Drain & Plumbing Surveys
- All Plumbing & Heating Repairs/Alterations
- All work Guaranteed

TEL: 01638 742873  
MOBILE: 07932 773515

7 NESS ROAD,  
BURWELL  
CAMBRIDGE, CB25 0AA

# Andy Pumfrey

Swaffham Prior

## Painter and Decorator

Many property maintenance tasks undertaken

A courteous, polite and considerate service at all times

Please call to discuss your requirements

Tel: 01638 741376

Mob: 07880 625159

10 High Street, Swaffham Prior, CB5 0LD

## ANGLIA GAS & ELECTRICAL SERVICES



No 150846

- Sales - Service - Repairs-Installation
- NG/LPG Gas Boiler / Central Heating Repairs & Servicing
- NG/LPG Gas Appliances/ Dual Fuel Appliances
- NG / LPG Landlord Safety Checks
- NG/LPG Residential Park Homes/Caravans
- Electrical Appliances Installation repairs/PAT Testing
- Essential Electrical & Plumbing Repairs/Maintenance

**Contact : Jim Perry** Phone/Fax (01638) 741432  
Mobiles 07768 856456 or 07740 088808

**E-mail : [jimperryages@ntlworld.com](mailto:jimperryages@ntlworld.com)**



**AMH**  
SERVICES

(Formally Peter Briggs)



**ANDREW HERRING**

**OIL & GAS BOILER REPAIR & SERVICE  
PLUMBING & HEATING SPECIALIST  
24hr CALL OUT**

ENQUIRIES and EMAIL  
AMHSERVICES298@AOL.COM

TEL/FAX 01638 560970  
MOBILE 0781 3536772

**CHIMNEY SWEEP**

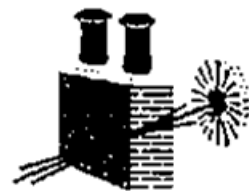
**J. L. WIGHT**

**Guild of Master Sweeps  
Problems solved/Quality advice  
Certificates issued  
HETAS Approved**

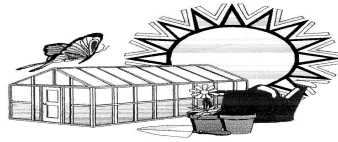
**01954 253315**

[www.camsweep.co.uk](http://www.camsweep.co.uk)

26 Cow Lane, Rampton







## RED2GREENHOUSE

At Bottisham Village College

### RED2GREENHOUSE

We are a local charity working with adults with learning difficulties and pupils from Bottisham Village College.

We can offer you a range of locally grown fresh vegetables, and a selection of plants for all seasons.

Also home made jams and pickles.

We are open Tuesday - Friday 9.30am - 3.30pm

Saturday - 10.00am - 12.00pm

We are behind the College, just follow the signs.

Telephone 01223 813650

We Look Forward To Seeing You

## **BURWELL COMPUTERS**

We provide a full range of computer repairs and information technology support services to businesses and home users.

- VIRUS & SECURITY • EMAIL & INTERNET
- BROADBAND • WIRELESS • ROUTERS
- NETWORKS • SERVERS • UPGRADES
- REPAIRS • NETWORK CABLING

Tel/Fax: **01638 742702**

Mobile: **07901 556895**

support@burwellcomputers.co.uk  
www.burwellcomputers.co.uk

## **HAZELS CLEANING SERVICES**

Office & Domestic Cleaning

Prompt and Reliable Service

References Available:

**Telephone : 01353 727772.**

**Mobile : 07786 972475**





# SOUTHGATE OF NEWMARKET

*A local family owned business offering  
personal attention and understanding*

**FUNERAL DIRECTORS**

**J.A. Fuller, T.D. Fuller, P.S. Fuller DipFD.**

25 Duchess Drive  
Newmarket  
Suffolk

CB8 8AG

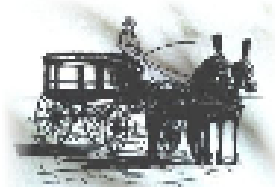
**01638 662480 (24Hour Service)**

*Private Chapels of Rest*

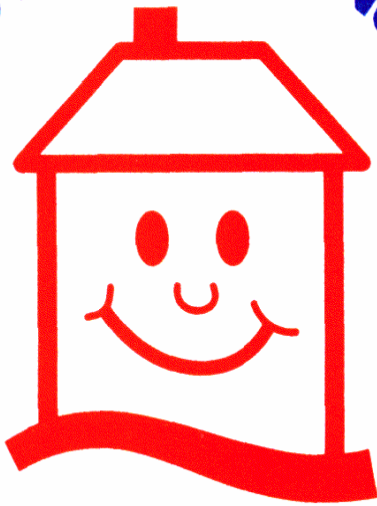
*Floral Tributes and Memorial Masonry arranged*

*Golden Charter Pre-Payment Plans available*

*Traditional Horse Drawn Hearse a dignified alternative*



**THE RED HOUSE DAY NURSERY**



## The Red House Day Nursery

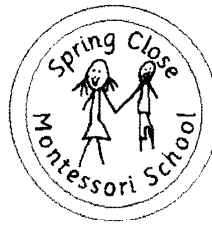
Quality day care for pre-school  
children aged from 3 months to 5  
years

### Learning through creative play

Open from 8 am to 6 pm  
Monday to Friday

**For more information  
ring:- 01638 741174  
90 HIGH ST,  
BURWELL,  
CAMBS, CB25 0HD**

Email:-redhousenursery@aol.com



**Spring Close  
Montessori  
School,  
Burwell**

*'a peaceful, yet vibrant  
environment with children  
absorbed in learning'*

*'an Education for Life'*

Nursery Education for  
2½ - 5 year olds,

3 terms - term time only  
Monday to Friday,  
9 am - 1 pm

Accepts Early Years Education  
Fund & Ofsted Inspected

Well-trained, experienced staff

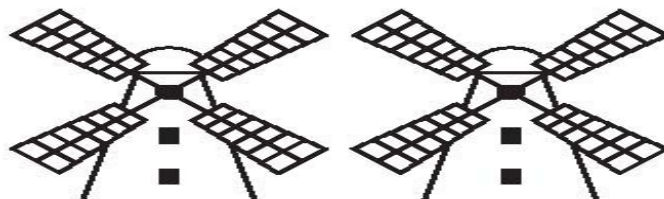
Waiting list



**Don't leave it too late!  
Come for a visit**

Enquiries to:  
Mrs Christine Hobbs,  
The Guildhall, Spring Close,  
Burwell, Cambs CB5 0HF  
Tel: 01638 743304  
Email:  
scms@scms.wanadoo.co.uk

# **Little Windmills Pre-School**



**Pre-School for 2½ to 5 year olds**

**“Fantastic Leadership”  
Ofsted Inspector 2007**

**Dedicated and enthusiastic staff**

**Reach Village Centre**

**Monday to Thursday 9.15 - 11.45am**

**Friday 9.00 - 12.30pm**

**Spring and Summer terms for school risers**

**Ring 07803 671200 during sessions  
for more information and to arrange a visit**

**Early Years Funding Vouchers accepted**

# Get it SORTED!

We all have those annoying little jobs that never seem to get done.,  
such as :-

The small painting job

The appliance that doesn't work properly

THAT shelf that hasn't been put up.

The door that won't close PROPERLY

The dripping tap

But now is the time to get it SORTED!

Tel Grahame on 07842 126270 for a free estimate.  
No job too small. Reliable and trustworthy.

**Hairdressing in the Comfort  
of your Own  
Home,**

**Lindsey**



**Professional Styling In All  
Aspects Of Hairdressing .**

**Cambridge, Newmarket,  
The Swaffhams & All  
Surroundings Villages .**

**Call Lindsey On !**

**Tel: 01638742063**

**Mob: 07837142117**

**Flexibles Hours to suit You**

## **Therapeutic Massage Manicure & Pedicure**

**For Health & Well Being**

**Ann Kiddy IHHT  
Swaffham Prior**

### **Massages**

Indian Head

Deep Tissue

Aromatherapy

Swedish

Hot Stone

Tel: 01638 742383

Mob: 07810035907

# Expertise on your doorstep

63 High Street **Burwell** Cambridge CB25 0HD Tel 01638 600875  
Mon-Fri 9am-5pm Sat 9am-12pm

**Customer Hotline** Tel 0845 601 3344  
Mon-Fri 9am-10pm Sat 9am-6pm Sun 11am-5pm

## CAMBRIDGE

### BUILDING SOCIETY

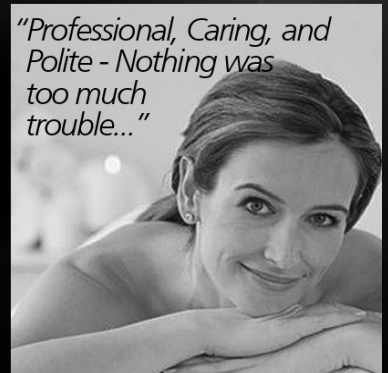
Time to keep your money close to home

Head Office Administration Centre PO Box 232 51 Newmarket Road Cambridge CB5 8FF  
Tel 0845 601 3344 [www.cambridgebs.co.uk](http://www.cambridgebs.co.uk)



experienced, friendly, affordable & local

## AWARD WINNING BEAUTY CENTRE



*"Professional, Caring, and Polite - Nothing was too much trouble..."*

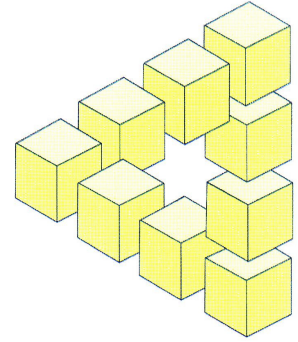
- Collin Facials • Body Treatments • Weight Control • Massage • Breast Lifting
- Waxing & Electrolysis • Microdermabrasion • Nail bar • Tanning



CAMBRIDGE 01223 411500  
NEWMARKET 01638 389339  
[www.sun-studios.co.uk](http://www.sun-studios.co.uk)

147 High Street, Cherry Hinton, Cambridge CB1 9LN





## INDEPENDENT FINANCIAL SOLUTIONS

You know that the State Pension is not enough, but you don't know what it will provide!

You want to save for your retirement, but you don't know what you will need!

You wish to protect your family against financial disaster, but don't know what cover you require!

You need to make your money work hard, but don't know which option is best for you!

You would like to reduce your tax bill, but you don't know how!

.....

**Whether you own a company, are self employed, employed or retired,  
we can help!**

**We don't believe in adding to your problems.**

**We believe in clear and simple solutions.**

Let us provide you with an **INDEPENDENT**  
review of your financial situation.

**Tel: 01638 615343 or Fax: 01638 615342**

**E-Mail: [qc@independent-financialsolutions.co.uk](mailto:qc@independent-financialsolutions.co.uk)**

**Website: [www.independent-financialsolutions.co.uk](http://www.independent-financialsolutions.co.uk)**

**Newnham Farmhouse, 16 Low Road, Burwell, Cambs, CB25 0EJ**

**Partners: Quentin Cooke (authorised Independent Financial Adviser) & Alison Cooke**

What you receive from your pension will depend on the performance of your fund.  
Investment funds can go down in value.





## The Dyke's End

In an age when pubs have been ruined by chilled-food suppliers and “trendy” alco-pops, we are pleased to offer what we regard as a traditional English pub.

A ticking clock, a real fire, candles on scrubbed tables, excellent food and a brewery to boot.

	Opening Hours	Kitchen Open
Monday	6pm to 11pm	Kitchen closed
Tues to Friday	Midday to 2pm, 6pm to 11pm	Midday to 2pm, 7pm to 9pm
Saturday	Midday to 11pm	Midday to 2pm, 7pm to 9pm
Sunday	Midday to 11pm	Midday to 2pm
Bank Holidays	Please telephone us to confirm our opening times	

You risk disappointment if you don't book in advance so please give us a call during our Opening Hours on 01638 743816

Quiz Night takes place on the last Sunday of every month, at 8.300pm

You can download all of our menus from our website at [www.dykesend.co.uk](http://www.dykesend.co.uk)



We look forward to welcoming you to our lovely pub

**The Dyke's End**, 8 Fair Green, Reach, Cambridge, CB25 0JD.  
**Tel:** 01638 743816 **Email:** [simon@dykesend.co.uk](mailto:simon@dykesend.co.uk) **Web:** [www.dykesend.co.uk](http://www.dykesend.co.uk)

# Madmix



We are your local supplier of Minimix ready mixed concrete.

Any quantity supplied from 1 cubic metre upwards, small trucks for easy access, same day delivery including Saturdays. Supplied from our own new plant.

We supply to construction, building trade, DIY – anyone who needs concrete at a competitive, fast, reliable service call **Madmix**.

Credit Cards, Cash, Cheques and Accounts accepted.

Support your local business  
**Madmix**  
From Madingley Mulch

---

## MADINGLEY MULCH

**Your Gardens Friend**

*\*BARKS\*SOILS\*COMPOSTS\*MULCHES\*CONDITIONERS\**

All delivered in our big 1 metre bag to your door or can be delivered loose in loads of 1 – 50 metres.

*\*SOFT/SHARP SAND \* 10/20MM GRAVELS\*BALLAST\*  
\*COBBLES \*LIMESTONE\**

Can be collected from our yard over weighbridge or delivered loose on our transport or in 1/2 metre bags.

MADINGLEY MULCH  
MADINGLEY ROAD  
COTON  
CAMBS  
CB23 7PH

TEL: 01954 212144  
FAX: 01954 210358  
[www.mulch.co.uk](http://www.mulch.co.uk)  
[kay@mulch.co.uk](mailto:kay@mulch.co.uk)

OPEN 7 DAYS A WEEK

# Our customers say that it's a brilliant concept

Capability Barns at Fen Drayton houses a brilliant venue where gardeners and garden designers can see and experience our unique **display gardens**. See the immense range of natural hard landscaping products and you will understand why Bannold have gained such a matchless reputation. *Come and see for yourself.*

Opening times Mon to Fri 7.30am to 5pm. Sat 9am to 1pm

For our complimentary brochure, call  
free on 0500 012231

**Bannold**®  
*always more choice*



**Specialists in natural hard landscaping materials**

Bannold  
Capability Barns  
Huntingdon Road  
Fen Drayton  
Cambridge CB24 4SD

T: 01954 231666 F: 01954 231522  
[www.bannold.co.uk](http://www.bannold.co.uk)  
Email: [supplies@bannold.co.uk](mailto:supplies@bannold.co.uk)

## For Hire from Reach Village Hall

Marquees - £80.00  
(includes erection by  
experienced personnel)

10' x 10' Gazebos - £20

Large BBQ - £20.00 deposit  
(£10.00 refunded if the BBQ is returned fully  
cleaned)

Please contact Andrew Hall on 01638 743737

## Village Centre



To help raise money to run the Village Centre we have a 100 club. Tickets are just £10.00 each.

The 100 club has 10 draws a year.  
8 draws of £20.00 on the 3rd Wednesday  
of the month  
2 draws of £50.00  
July and December

Please contact Joyce Harrison 742405